

District Cllr. Paul Howitt Cowan - June 2024 Report

Reservoir for Lincolnshire



Update on proposed reservoir in Lincolnshire

Anglian Water has released an artist's impression of the proposed new reservoir in Lincolnshire.

The design has evolved using the valuable feedback from the first phase of consultation and shows how the reservoir could feature in the landscape. Its shape and gently sloping embankments are designed to integrate with the surrounding villages and farmland.

New footpaths and cycling trails could help connect adjacent communities with the reservoir, creating a place that brings people, nature and water together.

The image shows a unique lagoon feature, which would maintain a consistent water level all year round, facilitating activities such as sailing and wind surfing. Each of these unique features would be connected by a network of new footpaths, encouraging visitors and the local community to explore the new outdoor destination.

We are continuing to engage with landowners, homeowners, local communities and other stakeholders as we develop our proposals. Three major rivers are involved, the Trent being one of them.

Our phase two consultation starts on 30 May 2024.

We will be welcoming the valued feedback of the local community and other stakeholders on our latest project proposals.

We are looking forward to updating you on a new emerging design for the reservoir.

We will also be outlining the preferred location of the associated water infrastructure needed to fill the reservoir, treat the water and distribute it to homes and businesses in the area. **More details**

www.lincsreservoir.co.uk

Parliament prorogued :

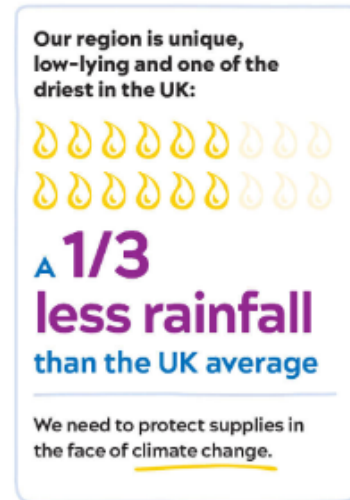
Two projects are implicated in the closure of Parliament namely;

Scampton – WLDC and the Home Office are/ were in the stages of a positive outcome but may now be at risk due to the General Election. This is most concerning. A clarification is being sought.

I can share with you that in talks with Michael Gove and Grant Shapps WLDC found them constructive and supportive of securing land for the commercial and heritage development. The Ministers actually complimented WLDC on their campaign. The Deputy Leader of WLDC was pleasantly surprised how accommodating Michael Gove was in the talks and different to the persona we receive in the media.

Devolution of Lincolnshire may also be at risk but I shall not ‘weep’ over this!

WLChurches Festival basked in fine weather over two weekends in May it is too early to say how successful it has been after the hard work invested in this event.



Cllr Bunney [who is both a District and a County Cllr] sent this report after a LCC Meeting which you may find interesting

Anti Social Behaviour Teams [Cllr. P. Bradwell]

Update on the new posts announced in the budget. Job Descriptions have been drawn up and are about to go out to recruitment. LCC will consult with the District Councils regarding the work. All members will be kept informed of the appointments and the work priorities for the posts.

NSIPs [Cllr. Colin Davie]

Cllr Davie welcomed the Government's announcement that Community Impact will be considered in the planning decision process. This means it is unlikely that all of the proposed projects will be approved.

Cllr Davie would prefer that roof tops, brownfield and greyfield sites, car parks, lakes etc. are used for solar etc rather than prime agricultural land.

He also believes that all new buildings, residential and commercial, should be constructed on sustainable lines – no longer should profits determine the standards of construction.

Food Security [Cllr. Colin Davie]

LCC has relaunched the Farmers and Horticulturalists Forum to consider how LCC can help food producers across the county and not just on county farms.

Bus Services Cllr Richard Davies]

The new improved bus services have gone down well. The challenge is to keep user numbers up.

LCC will be lobbying The Government to keep the max £2 scheme in place. It has definitely had a positive affect.

Foxby Hill - Gainsborough [Cllr. Richard Davies]

LCC will do all they can to get the project completed a.s.a.p. – the current slippage is unfortunate.

Gainsborough members will be kept informed of progress.

Anglian Water – new pipeline [Cllr Colin Davie]

The project has come to a halt – it looks as if the contractors have just walked away. This is not acceptable. Anglian Water have informed LCC [Colin Davie] that they are fully committed to the project but are having to re-phase the work. They have given a 4 – 5 week period for a further update. LCC are not happy with this time frame and will push for a quicker response.

Speeding in Villages etc. [Cllr. Richard Davies]

Speeding is a major priority for LCC. The Road Safety Partnership continually reviews roads etc. LCC are currently looking at a 20mph speed restriction for built up areas.

However, there is a need to maintain a balance and not give in to an anecdotal driving policy. The Counties policies and decision analogues take into account mean speed, number & density of properties and accident history. LCC approves the speed restriction zones – Enforcement however is a matter for the police and other agencies.

GP Provision in Lincolnshire [Cllr. Crawley]

10% of Lincolnshire surgeries are either inadequate or are in need of improvement. LCC will be pushing the Integrated [Health] Care Boards to resolve the issues.

The number of missed GP appointments is very high and take up valuable scarce resources that could be used to improve core services.

Highways. [Cllr Richard Davies]

We are constantly informed that extra large sums of capital money are being allocated to Highways – what difference is this expenditure having on the road stock?

- Over 200km of unclassified road have been relaid in the last 12 to 18 months – 5% of current stock. Would not have been done without this extra money – however, there is still a long way to go.
- The number of designated Flood response teams has been increased – each Highway Division now have their own dedicated team – rather than shared teams as before.
- A longitudinal crack filling programme is being trialled. Polymer infill is being placed along the cracks which occur in minor roads after they have been relaid. [The new surface falls away to the grass edges exposing a ridge crack along the centre of the carriageway.]If successful, this will improve the long-term sustainable repairs of unclassified roads.

PDJ Howitt-Cowan 25/05/2024